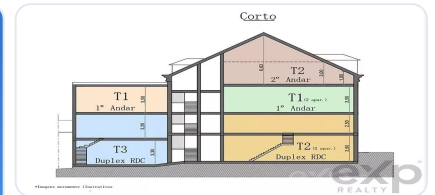


At RealKasa®, our market strategy is focused on discretion, premium presentation, and highly qualified buyer matching. Each property is positioned with a tailored narrative to maximize perceived value and market response.

City Center Property Portimão 350 m from Beach 2.8 Km

Ref: 85506834 | Faro > Portimão > Portimão



7 apartamentos

T1	52, 56m²	T2	97, 0m²	
T1	54, 5m²	T2	100, 8m²	T3 128, 0m²
T1	70, 0m²	T2	107, 5m²	

Area util 610m²
Area Bruta 840m²

€650.000

Business type	Sale	Property type	Building
Bedrooms	-	Bathrooms	-
Area	610 m2		

Description

Historic building with character and great potential for complete reconstruction in the heart of Portimão city center on the commercial street, parking nearby. The building requires renovation. The 3-storey building with ground floor, first and second floor, with a gross area of 940 m² for rehabilitation, in the ARU zone (Urban Rehabilitation Area). To fully understand the potential, plans have been made to see the possibilities of this downtown building with: Ground Floor: Duplex 3-bedroom - 128 m²; Duplex 2-bedroom - 97 m²; Duplex 2-bedroom - 100.8 m². 1st Floor: 1-bedroom - 52.5 m²; 1-bedroom - 54.5 m²; 1-bedroom - 70 m². 2nd Floor: 2-bedroom - 107.5 m². Usable/habitable area of the building 610 m², gross area 940 m². Excellent investment opportunity. Specific characteristics: Energy certificate: exempt, Built in 1951.

Related Properties



Faro > Portimão > Portimão

Zenith Residences: The Future of Sustainable Living in Portimão

Ref: 86183560

under request



Faro > Portimão > Alvor

Alvor - Building Plot

Ref: 86674118

€85.000



Faro > Portimão > Portimão

ZENITH Residences

Ref: 86187321

€251.000



Faro > Portimão > Portimão

Charming T1+1 Apartment with Large Terrace in the Heart of Portimão's Historic Center

Ref: 86818576

€279.000

Real Estate Solutions

This brochure was prepared by RealKasa® for property presentation.

Phone: +351 914064060

Email: info@realkasa.pt

<https://www.realkasa.pt/en/listings/85506834>